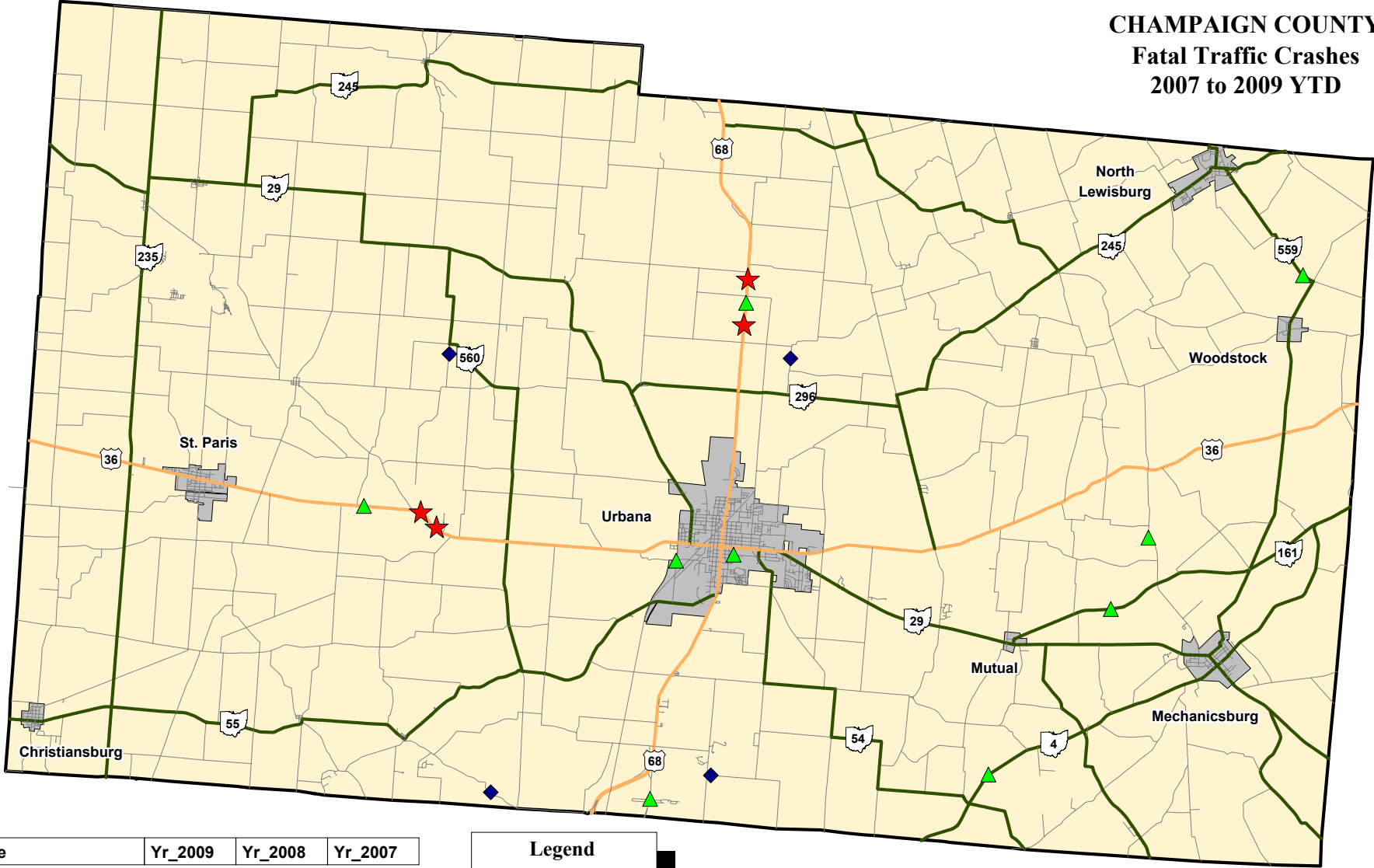


CHAMPAIGN COUNTY

Fatal Traffic Crashes

2007 to 2009 YTD



Type	Yr_2009	Yr_2008	Yr_2007
# Rural	4	4	7
# Urban	0	0	2
# OVI Related	0	2	4
# Commercial Related	1	0	0
# Motorcycle Related	0	1	2

Legend

- ★ 2009 Fatal (4)
- ◆ 2008 Fatal (4)
- ▲ 2007 Fatal (9)



Data Source: OSHP LINCS Database
 Map Design and Layout: OSHP Statistical Analysis Unit
 Ohio State Highway Patrol
 October 5, 2009

