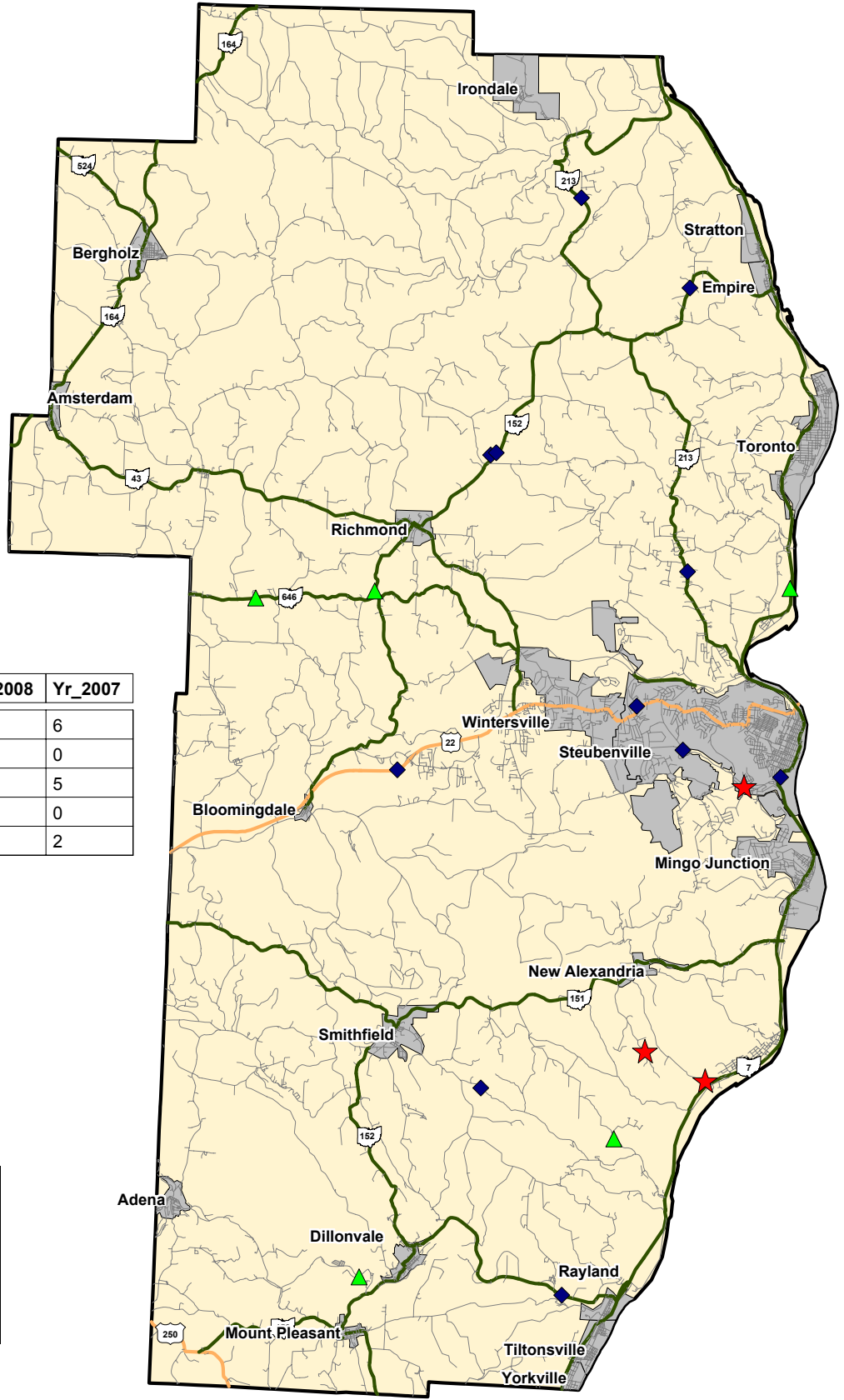


JEFFERSON COUNTY
Fatal Traffic Crashes
2007 to 2009 YTD



Type	Yr_2009	Yr_2008	Yr_2007
# Rural	2	9	6
# Urban	1	2	0
# OVI Related	2	5	5
# Commercial Related	0	1	0
# Motorcycle Related	1	5	2

Legend

- ★ 2009 Fatal (3)
- ◆ 2008 Fatal (12)
- ▲ 2007 Fatal (5)



Data Source: OSHP LINCS Database
 Map Design and Layout: OSHP Statistical Analysis Unit
 Ohio State Highway Patrol
 October 14, 2009

