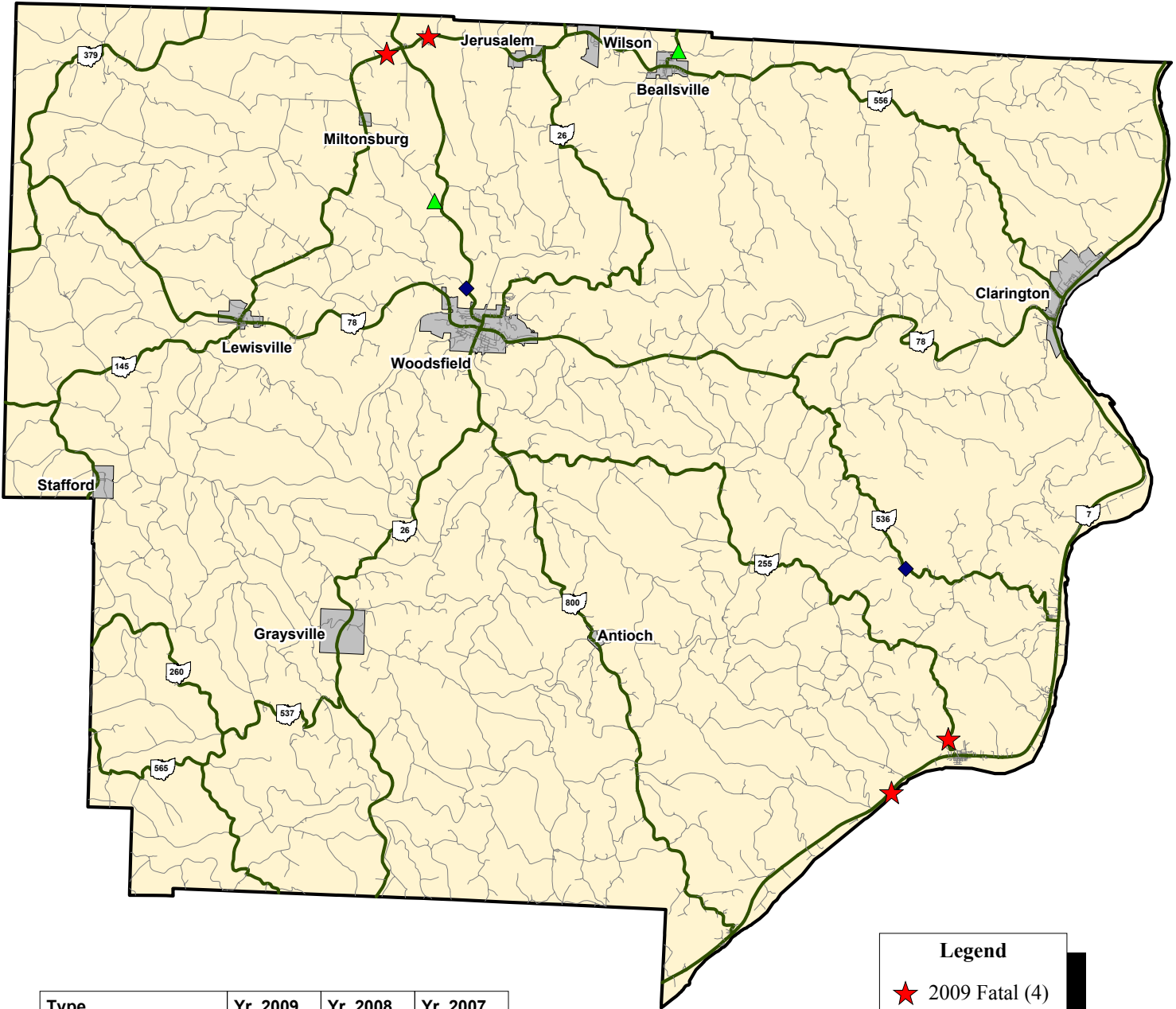


# MONROE COUNTY Fatal Traffic Crashes 2007 to 2009 YTD



Type	Yr_2009	Yr_2008	Yr_2007
# Rural	4	2	2
# Urban	0	0	0
# OVI Related	1	0	2
# Commercial Related	0	1	0
# Motorcycle Related	1	1	1

**Legend**

- ★ 2009 Fatal (4)
- ◆ 2008 Fatal (2)
- ▲ 2007 Fatal (2)



Data Source: OSHP LINCS Database  
Map Design and Layout: OSHP Statistical Analysis Unit  
Ohio State Highway Patrol  
August 28, 2009

