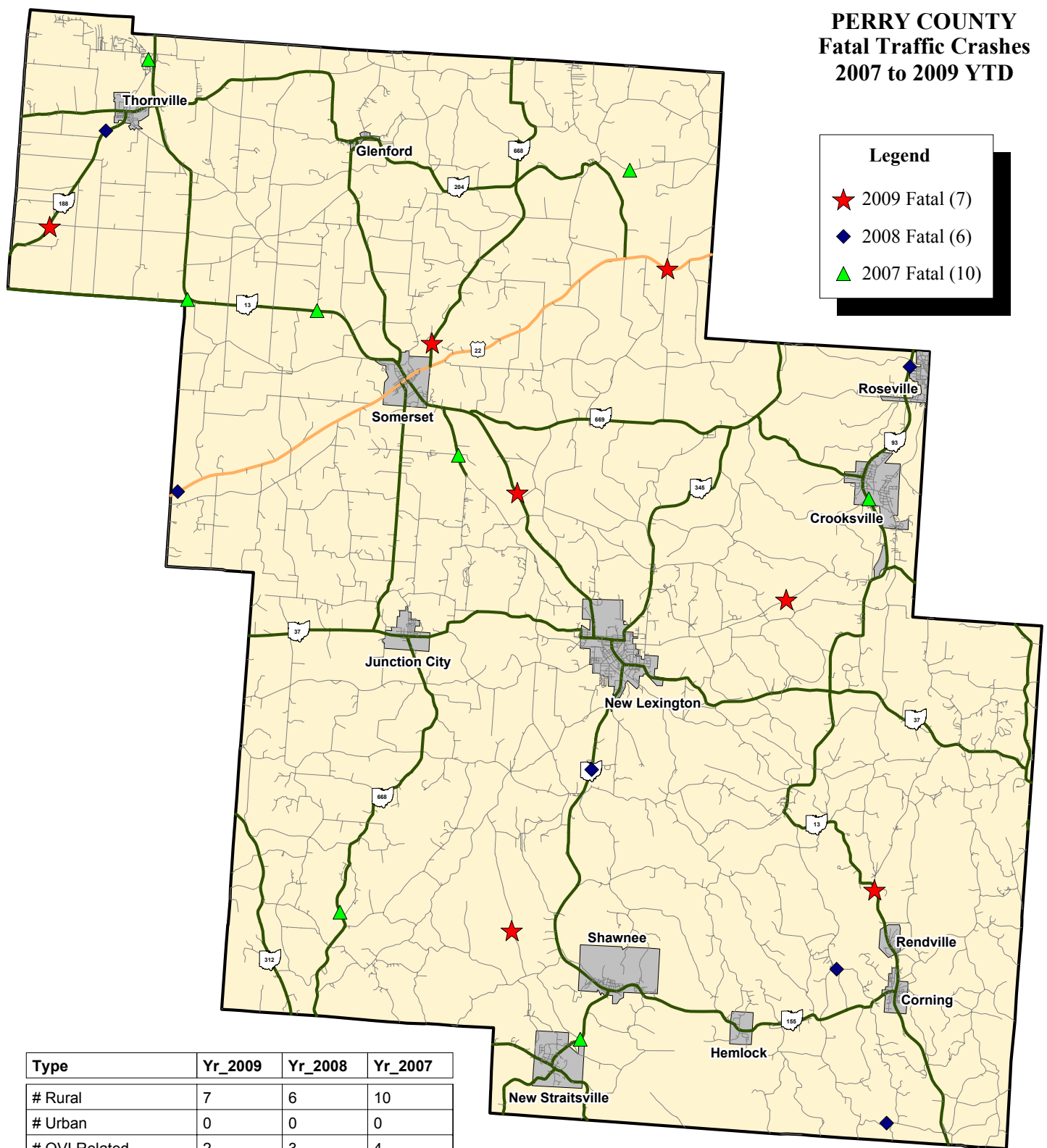


# PERRY COUNTY Fatal Traffic Crashes 2007 to 2009 YTD

**Legend**

- ★ 2009 Fatal (7)
- ◆ 2008 Fatal (6)
- ▲ 2007 Fatal (10)



Type	Yr_2009	Yr_2008	Yr_2007
# Rural	7	6	10
# Urban	0	0	0
# OVI Related	2	3	4
# Commercial Related	1	0	1
# Motorcycle Related	1	1	2



Data Source: OSHP LINC'S Database  
 Map Design and Layout: OSHP Statistical Analysis Unit  
 Ohio State Highway Patrol  
 November 12, 2009

