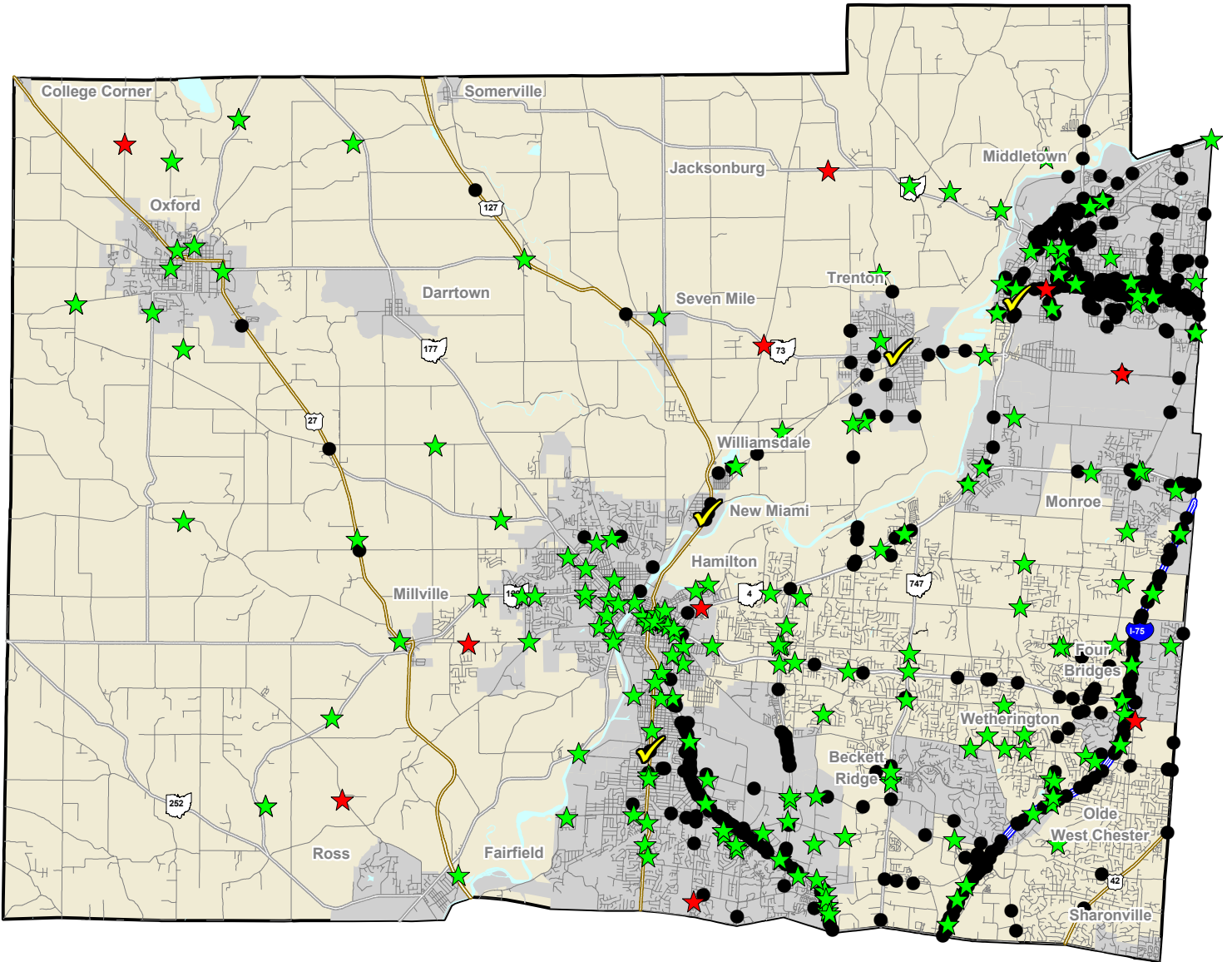






Butler County OVI Activity Year 2015



Legend

-  OVI Checkpoint (4)
-  OVI-Related Fatal Crash (10)
-  OVI-Related Injury Crash (200)
-  OVI Stop (611)

**There were a total of 200 OVI-Related Injury Crashes; 14 or 7% was not mappable.*



Data Source: ODPS Electronic Crash System;
OSHP Computer-Aided Dispatch (CAD) System
Map Design and Layout: OSHP Statistical Analysis Unit
Ohio State Highway Patrol
January 29, 2016

